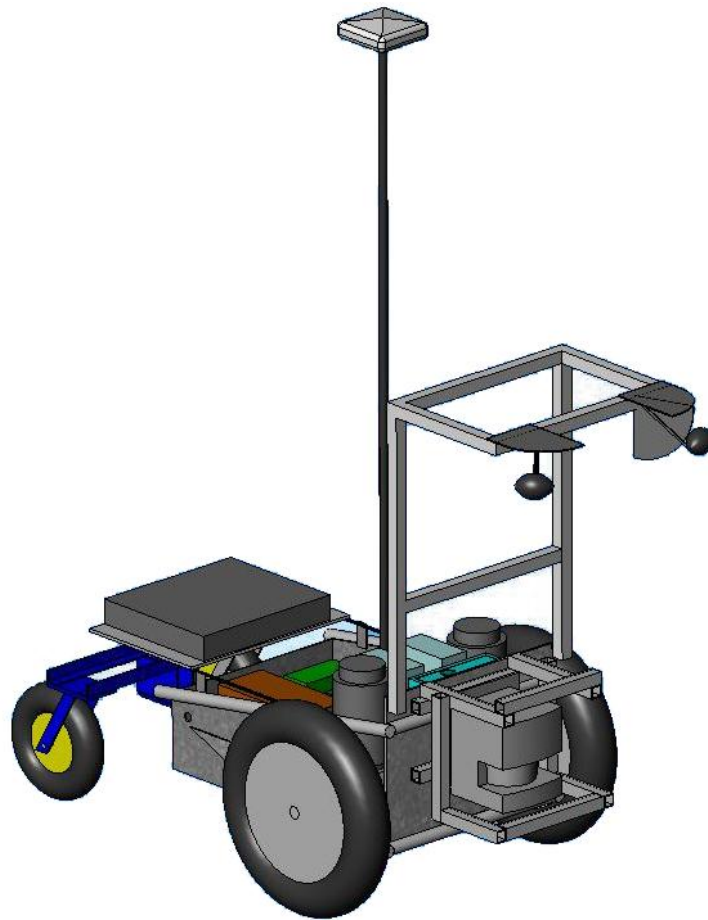


Q

2008 IGVC DESIGN REPORT



Team Members

Neil Robertson, David Pietrocola, Nabil Imam, Adam Fine, David Maliniak, Kumud Nepal, Orko Momin

Advisor

Dr. David Ahlgren



Trinity College
HARTFORD CONNECTICUT

Contents

1. Introduction.....	3
2. Innovation.....	3
3. Design Process.....	4
3.1 Team Organization.....	4
3.1.2 Group Definitions.....	4
3.2 Design Methodology.....	5
4. Mechanical System.....	5
4.1 System Layout.....	5
4.2 Drivetrain.....	6
4.3 Mobility.....	6
4.4 Reliability.....	6
5. Electrical System.....	6
5.1 System Integration.....	7
5.2 Power Supply.....	7
5.3 User Interface.....	8
6. Sensors.....	9
6.1 Digital Cameras.....	9
6.2 SICK Laser Range Finder.....	9
6.3 Digital Compass.....	9
6.4 Differential Global Positioning System (DGPS).....	9
7. Software.....	10
7.1 Extended Kalman Filter.....	10
7.2 Obstacle Avoidance.....	10
7.3 Navigation.....	10
7.4 Image Processing.....	11
7.5 Autonomous Challenge.....	11
7.6 Navigation Challenge.....	11
7.7 Motor Control.....	12
8. Safety.....	12
9. JAUS.....	13
10. Predicted Performance.....	13
10.1 Mobility.....	13
10.2 Battery life.....	14
10.3 Complex Obstacles.....	14
10.4 GPS Waypoint Accuracy.....	14
10.5 System Reaction Time.....	14
11. Vehicle Cost.....	15
12. Conclusion.....	15
13. Sponsors.....	16

Faculty Statement

This is to certify that Q has undergone significant redesign in both hardware and software from last year's IGVC entry. The Q team members worked on the robot as an Independent Study project and received 1.0 credit (3 credit hours) per semester. This project is significant and has led to many senior design projects in both Computer Science and Engineering.

Dr. David J. Ahlgren,
Karl W. Hallden Professor of Engineering, Trinity College

1. Introduction

The Trinity College Robot Study Team presents the second iteration of Q, an autonomous vehicle for the Intelligent Ground Vehicle Competition (IGVC). Q is named for the omnipotent entity found in Star Trek and for the gadget guy in the James Bond series. There is a focus on a simplified control system, rather than the highly modular systems of previous years. Based on a modified wheel chair chassis, Q is a stable and reliable platform. The team continues its tradition of exploring innovative technologies by employing a modern high density battery system.

2. Innovation

The 2008 IGVC competition is an opportunity for the team to take full advantage of last year's new mechanical platform by mating the platform with new sensors. This year, Q features two new sensors, a SICK laser range finder and a DGPS smart antenna. The navigation and obstacle avoidance algorithms have been revised in order to take advantage of the significantly improved performance of the laser range finder when compared to sonar range finders. A Kalman filter improves localization and overall robustness.

Q features JAUS Level 3 compliance and a centralized control system. Additionally, closed loop speed control and dynamic image processing algorithms will significantly improve the performance of Q over its predecessors. A modern power system increases efficiency by using state of the art high energy density batteries.

The base platform is a modified PerMobil Trax off road wheel chair frame. This offers a significant improvement in reliability and stability of the platform compared to the custom built platforms of previous entries.

A Dell Inspiron D820 with an Intel T7400 Core 2 Duo processor and 2GB of RAM running National Instruments (NI) LabVIEW 8.21 acts as the central control for Q. A Roboteq AX3500 dedicated motor controller and a pair of US Digital E5S optical encoders act the platform for the closed loop speed control. A NI Compact FieldPoint (cFP-2020) is used as dedicated processing for the laser range finder. The JAUS architecture is used for communication between the two processors.

Q also features new control algorithms in order to take advantage of an improved sensor suite. The Kalman filter is implemented in order to efficiently combine data from each source. A dynamic waypoint algorithm is used for the navigation challenge; this is an improvement over the static waypoint order of previous years. A modified Vector Field Histogram (VFH) algorithm is combined with auto-regressive modeling in order to avoid obstacles and stay within lane boundaries for the autonomous challenge.

Q uses cutting edge battery technology by employing a pair of Nilar 24 Volt 9Ah NiMH batteries for driving the motors and an UltraLife 30V 6Ah battery for the electrical systems. These batteries provide high energy densities and are ideal for autonomous robotics.

3. Design Process

3.1 Team Organization

The team was organized into five main groups based on the various task families within the scope of Q. Most members of the team worked in more than one group. This year sees the addition of the systems, management and testing groups to the software and mechanical groups. The systems group was created in order to facilitate communication across specialties and to improve collaboration.

Traditional project management techniques were implemented throughout the project. This includes a clear definition of the scope before design began as well as a group dedicated to managing risk throughout the design process.

3.1.2 Group Definitions

The following is a definition of the responsibilities of each group.

Management

This group defines the scope of the project and designates team members and tasks to each group. The group is also responsible for identifying risk throughout the project. Risk includes falling behind schedule, changing the scope of the project or not documenting a task. This group is also responsible for recording weekly progress and updating the Gantt chart accordingly. Each team member contributed approximately 200 man-hours towards this project.

Documentation and Testing

This group is in charge of creating testing procedures and identifying the required documentation for each task. The group also makes sure that Q complies with all IGVC design regulations.

Systems

The Systems group works with the mechanical and software groups to implement an optimized design. The group is responsible for connections between components as well as power, sensors and communications.

Mechanical

This group is responsible for the design, mounting, and documentation of all hardware.

Software

The software group follows standard software design protocol to meet the scope of the project.

3.2 Design Methodology

The design process for Q began with the definition of a project scope based on the analysis of customer requirements as determined by IGVC rules, innovation goals and an evaluation of previous performances. An iterative process of reverse scope creep was used to design Q. In this process, the initial goals were scaled back until the design became feasibly based on the time and resources available.

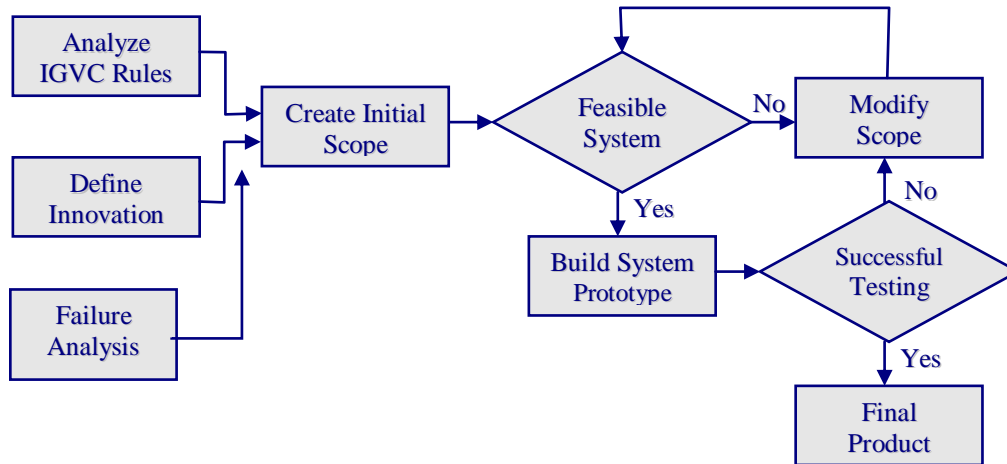


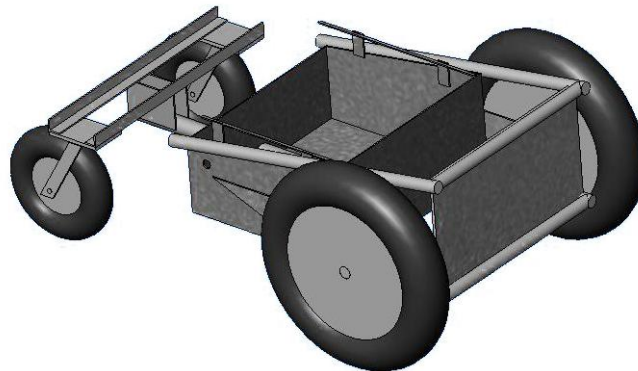
Figure 3.1: Iterative Design Cycle

4. Mechanical System

4.1 System Layout

The physical platform of Q is a modified Permobil Trax off road wheelchair. It has a steel frame with designated compartments for each component. The frame can support a payload of over 250 lbs and has a small footprint of 40” by 26”. Component placement was carefully designed in order to isolate the power and control systems and to minimize wire lengths. A sensor frame was constructed of 80/20 extruded aluminum channel, which allowed for quick changes to component layout. The sensor frame folds down onto the body for easy transportation. Figure 4.1 shows the modified chassis.

Figure 4.1: Q Chassis



4.2 Drivetrain

Q is powered by a pair of 500W Leroy Somer MBT1141 motors geared with a 26:1 ratio. The 24 Volt DC motors provide high torque. A Roboteq AX3500 motor controller provides 40A per channel with 250A peak. There is a theoretical maximum speed of 9.5 mph although the speed is limited to 5 mph in order to comply with IGVC regulations.

4.3 Mobility

Q has a differential front wheel drive system and uses a pair of rear mounted casters. The casters are mounted on a pivot pipe that keeps at least one caster in contact with the ground on any terrain. This configuration significantly improves mobility by enabling Q to turn around in place if confronted with a dead end. This configuration also allows a greater range of motion as there is no restriction on the heading of Q due to turning radius.

4.4 Reliability

The professionally manufactured Permobil Trax off-road wheel chair offers a reliable and safe platform. There is a front suspension system that limits vibration to the components and provides greater accuracy for the sensor systems.

The 80/20 extrusion forming Q's sensor frame is designed for industrial environments and is resistant to dirt, moisture, and vibration. The extrusion's profile is tapered to allow all hardware attached to it to be self-locking, simplifying the choice of hardware and further reducing weight. All critical electrical connections utilize positive locking connectors that are immune to shock and vibration and provide tactile feedback to confirm proper connection. Wiring is carefully dressed with strain reliefs to prevent fatigue failure. All components are mounted using multiple points and protected by durable acrylic panels that are resistant to the environment and to impact, for all-weather operability. The wheels and casters are loaded at a fraction of their rated design loads, giving a large margin of safety in the mechanicals.

5. Electrical System

The onboard electronics and power distribution system have been dramatically improved in Q to ensure reliability and robustness during operation. A custom power distribution circuit with redundant safety features supplies three voltage levels from one battery source to accommodate the various power requirements of the electronics. A separate power source is used for the drive system; this isolation reduces the effect of noise caused by the motors on the rest of the system.

5.1 System Integration

The Dell Inspiron D820 laptop acts as the central control of Q. All image processing and navigation algorithms are performed on the laptop. The IEEE1394 cameras connect directly to the laptop. The digital compass and DGPS are connected to the PC over RS232. The NI Compact FieldPoint (cFP) is responsible for processing of the laser range finder data, this data is sent over ethernet to the laptop. The motor controller uses a PID algorithm in order to determine to correct amount of power to send to each motor. The optical encoders provide feedback for this algorithm. An RF remote control is used to control Q and perform a remote emergency stop if required.

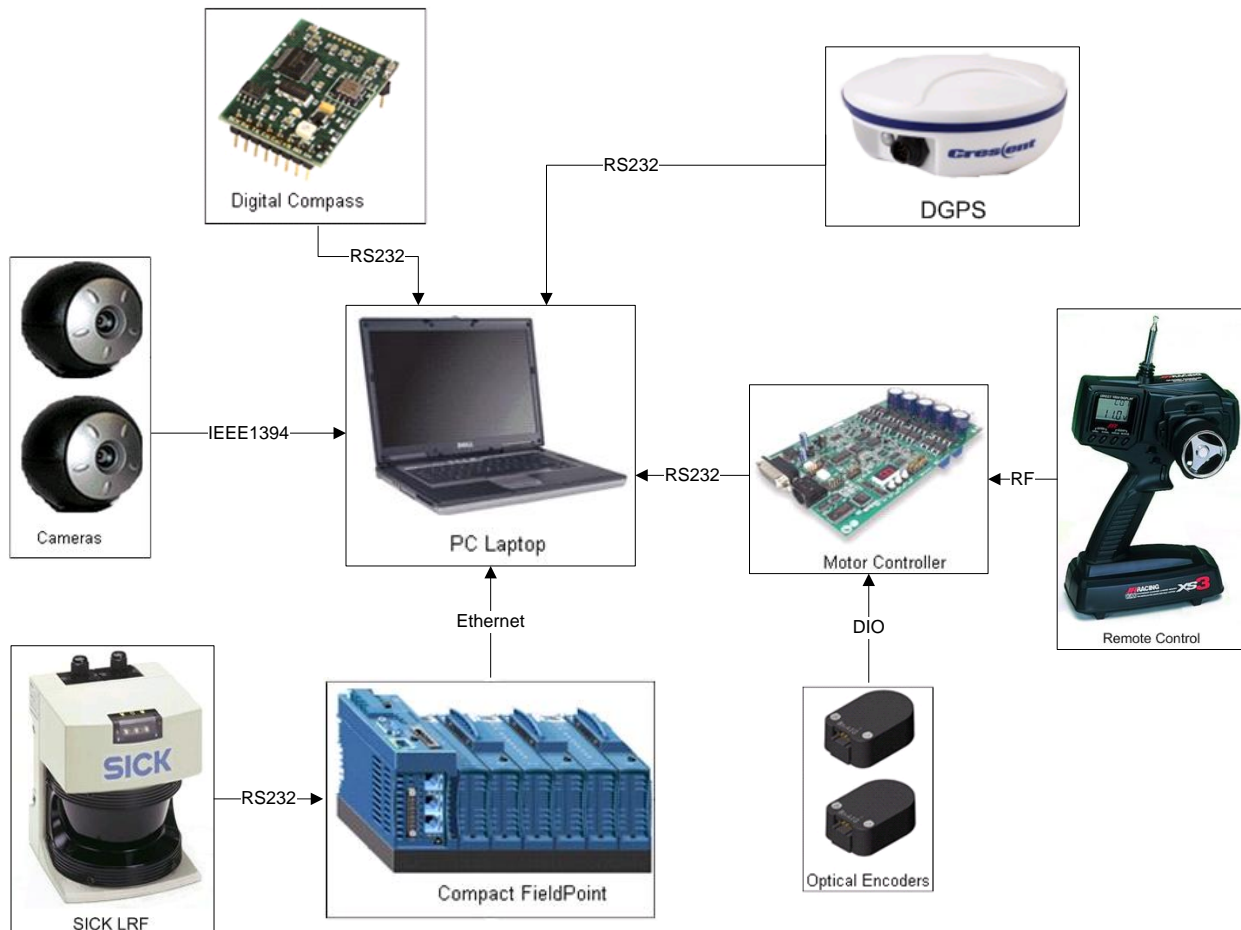


Figure 5.1: Control and Sensor System

5.2 Power Supply

Q's power supply comes from two different battery sources. The two DC motors are powered using a pair of Nilar nickel metal hydride (NiMH) 24 VDC 9Ah batteries. This battery has a relatively flat discharge curve that enables it to provide a steady power over a range of voltages. It is highly compact and lightweight with dimensions of 278 x 129 x 57 mm and weight of 4.3 kg. Its features such as deep cycle capacity and high energy density together with its robustness makes this battery ideal for powering motors in an autonomous robotics setting.

The Nilar batteries are connected through the motor controller to each of the motors. A 100A circuit breaker is installed between the batteries and motor controller in order to safely limit the current drawn by the system.

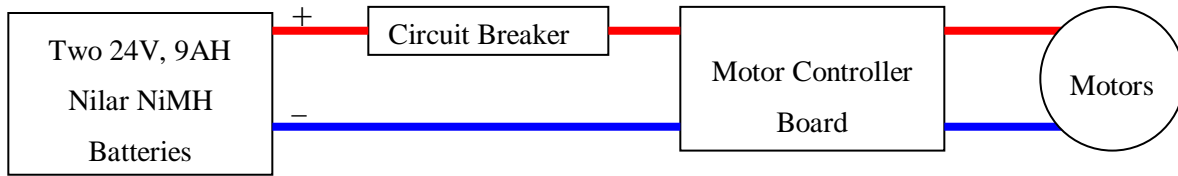


Figure 5.2: Drive Power System

A third Nilar battery drives the SICK laser range finder. The power requirements of this sensor call for a dedicated power supply, a separate power supply also improves the running time of the system.

The entire sensor and control system, except for the laptop and laser range finder, is powered using one UltraLife Lithium Ion battery. The battery provides 6 Ah continuous at 30 VDC, resulting in a run time of approximately one hour. It is lightweight and compact, weighing in at 1,440 grams. The state of the art design of the UltraLife battery allows it to have a high energy density and provide a total of 173 WH of continuous power.

The power from the UltraLife battery is converted to +5, +12 and +24 Volt regulated potentials by highly regulated DC-to-DC converters that are mounted on a custom printed circuit board. For safety, several circuit breakers and heat sinks are put in place to limit the current and dissipate heat respectively. A regulated clean supply of voltage is important for onboard equipment, and bypass capacitors between each voltage line and ground achieve this purpose. Figure 5.3 illustrates the power distribution.

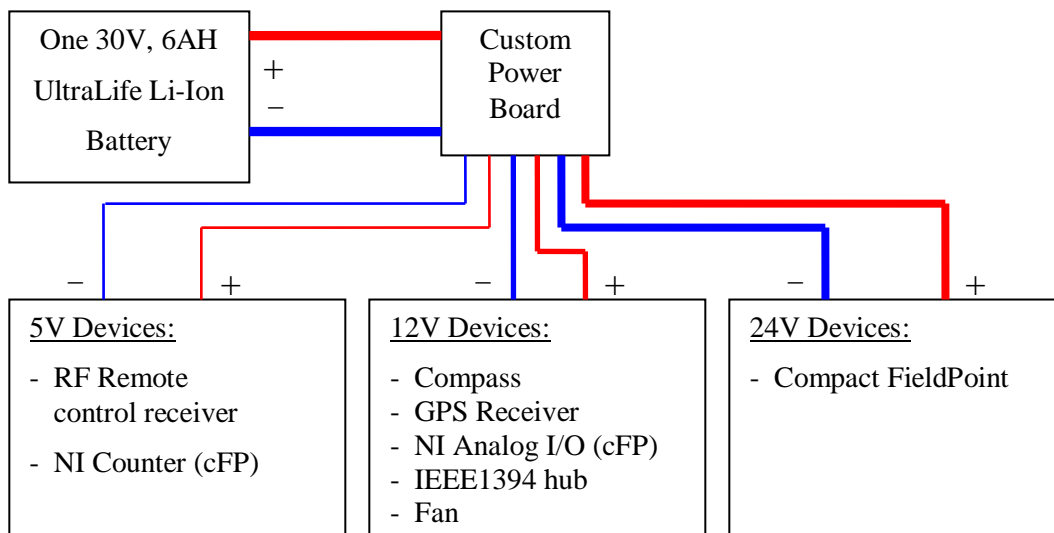


Figure 5.3: Control and Sensor Power System

5.3 User Interface

User initialization of Q occurs via the user control panel located next to the laptop. The control panel features an on-off switch for the main system along with a switch to select either navigation or

autonomous challenge mode. The panel also features an analog display for the current voltage level of the system battery as well as the 5 V, 12 V, and 24 V lines on the power supply. Q can also be operated using a remote control that directly controls the motors and the E-Stop as a safety precaution. Q can be programmed over Wi-Fi or directly from the onboard laptop.

6. Sensors

Advances in sensor systems have enabled intelligent and efficient obstacle avoidance in mobile robotics. Q utilizes one laser range finder, two digital cameras, a compass, a pair of optical encoders and a differential GPS to perceive its environment and support intelligent operation.

6.1 Digital Cameras

Q uses two ADS Tech Pyro cameras for its vision system. Both cameras use a 640 by 480 pixel resolution with an update rate of 15 frames per second (fps) and a 52° viewing angle. They are interfaced to the laptop through an IEEE1394 hub. The cameras are mounted with custom built devices that allow for 90° of freedom in both the vertical and horizontal direction.

6.2 SICK Laser Range Finder

A SICK LMS-291 laser range finder (LRF) represents a significant upgrade to the Q sensor suite for 2008. This sensor has a 180° field of vision with an angular resolution of 0.25° and a measurement resolution of up to 10mm. The LRF is implemented with a dedicated power supply in the form of a single 24V NiMH battery. A NI Compact FieldPoint (cFP) serves as data processor, JAUS messages are used to transfer the data between the cFP and laptop.

6.3 Digital Compass

Vehicle orientation on Q is obtained using a Honeywell HMR-3300 digital compass that is interfaced to the cFP over RS232. The compass provides precise readings for the azimuth angle and has a range of $\pm 60^\circ$ for pitch and roll data with an accuracy of $\pm 1^\circ$.

6.4 Differential Global Positioning System (DGPS)

Vehicle localization is achieved by means of a Hemisphere Crescent A100 DGPS smart antenna. The DGPS beacon, GPS antenna and GPS hardware are enclosed in a single compact unit (2.2”H x 5.1”W). The system has a maximum error of 0.6m with 95% confidence. The antenna is mounted on a carbon fiber rod at six feet, which is the highest allowed by the IGVC competition.

7. Software

This year there was a focus on efficient software design; source control was implemented and the NI LabVIEW programming environment was used. LabVIEW enables efficient and effective software design by providing integrated source control and project management. LabVIEW provides a graphic programming interface which allows complicated algorithms to be represented with simple graphic controls.

7.1 Extended Kalman Filter

An analysis of previous performance discovered that bad sensor data was the primary reason for unexpected behavior. An extended Kalman filter was developed in order to solve this problem.

The EKF combines odometry data from a pair of optical encoders, heading data from a digital compass and latitude, longitude and heading from a DGPS in order to calculate the best possible estimation of vehicle location.

The EKF significantly improves the robustness of the sensor suite; in previous years, the failure of a single sensor resulted in complete failure of the current task. The EKF is capable of recognizing sensor failure and adjusts accordingly. If the DGPS fails, a longitude and latitude can still be approximated by dead reckoning using optical encoders.

7.2 Obstacle Avoidance

Obstacle avoidance represents one of most substantial innovations over previous years. The obstacle avoidance algorithm is a modified Vector Field Histogram (VFH) algorithm. This algorithm takes a polar histogram representation of obstacles and plans a path accordingly. Camera and laser range finder data are combined on local occupancy grid and converted into a histogram which is analyzed for openings between obstacles. Openings are categorized as wide or small. Q will navigate through the middle of a small opening and to the side closest to the target direction for a large opening.

The algorithm utilizes a cost function which considers the target direction, wheel orientation and previous direction. When there is more than one opening between obstacles, this cost function is used in order to select the best candidate direction. The opening with the lowest cost is chosen. The result is a heading which represents the best path.

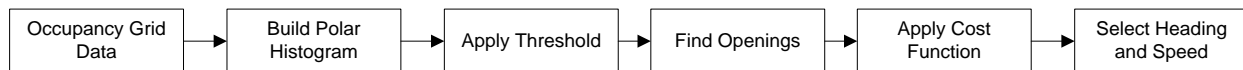


Figure 7.1: Modified VFH Algorithm

7.3 Navigation

Navigation is performed by applying the A* search algorithm on top of the obstacle avoidance algorithm. The combination of these algorithms allows for look ahead verification and ensures that a

candidate direction of the obstacle avoidance algorithm actually guides Q around an obstacle. This is mostly important in the navigation challenge, where there is no clearly defined path. The navigation algorithm performs several iterations of the obstacle avoidance algorithm in order to determine the best path up to a defined distance in front of Q. For each candidate direction, a new polar histogram is created based on the projected location of Q, the obstacle avoidance algorithm is performed and another set of candidate directions is calculated. This results in a tree of candidate directions. The A* search method is used in order to select the candidate direction with the lowest cost.

7.4 Image Processing

Images are extracted from two IEEE1394 digital web cameras in a real-time environment. The raw images are passed over to the laptop and processed by an algorithm which detects lines and obstacles. The image processing algorithm was developed using National Instruments IMAQ Vision Builder and utilizes hue, saturation, and luminance of an input image. In addition, the image is sent through a number of low pass and particle filters to reliably identify lines, potholes and any other obstacle. The thresholds for filtering are determined through statistical analysis, which makes the algorithm effective in a variety of outdoor lighting conditions. First a color analysis is performed in order to detect any non-white obstacle. A mask is created from this analysis and added to the original image. A threshold which identifies lines and white obstacles is applied to the masked image. The result is a binary bitmap which clearly defines obstacles. This bitmap is used by the obstacle avoidance algorithm.

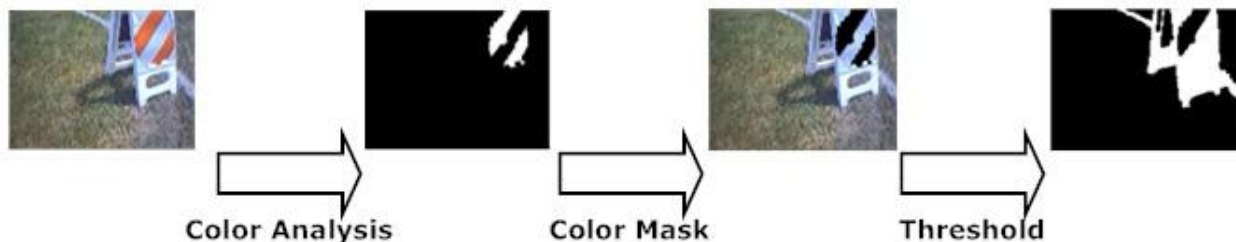


Figure 7.2: Image Processing Algorithm

7.5 Autonomous Challenge

For the autonomous challenge the strategy is to set the target for the obstacle avoidance algorithm to a fixed distance in front of Q along the planned path. In cases where Q is approaching a turn, the target will be appropriately placed along the turn and within the boundaries of the lane. In case no obstacles or lines are present; Q assumes a lane width of ten feet and sets a target down the middle of the path. Such predictions will be done using a technique that is widely used in analyzing and predicting time series data. Through image processing, the position of a detected line is known. If these positions are treated as a time-series, future values of the positions can be predicted using past values using a technique known as auto-regressive modeling.

7.6 Navigation Challenge

The navigation challenge strategy represents another improvement over previous years. The waypoint target will dynamically change based on information the robot learns about its environment. As more information is learned about the course, Q decides which waypoint is closest to its current location.

The first step in the path planning strategy determines the drive order of the waypoints. Since only the coordinates of the waypoints are given, and not the obstacle coordinates, the order is initially determined assuming that no obstacles are present. This is done by a fairly simple program that was written using knowledge of graph theory and discrete mathematics with ideas being borrowed from Dijkstra's algorithm. The program calculates the shortest path between all waypoints from a starting position.

Distances of straight line segments from the starting location to each of the waypoints are calculated by the program. As Q gains knowledge of obstacles on the course, new waypoint orders are calculated based on the most efficient path to waypoints with obstacles in the way. After each waypoint is reached, the program is run again, with the most recently reached waypoint as the source, and all previous waypoints ignored. As more information is obtained about course obstacles, a more efficient waypoint order is determined.

7.7 Motor Control

The motor control is a closed loop system utilizing PID control. A lookup table is used in order to convert the speed and heading generated by the VFH algorithm to motor controller commands.

8. Safety

Safety has been given the utmost priority in Q. Care has been taken to properly wire all components with strain relief. The power supply also ensures safety of the electronic components by its use of circuit breakers to limit the current from exceeding two amps for each voltage line. In addition, the control panel serves as a safe interface to operate the vehicle.

The high current draw throughout the motor power system necessitate proper handling and care to ensure safety of the vehicle and team members during operation. The Nilar battery is equipped with a nylon-insulated, AWG 6 copper wire and quick connectors, rated at 50 Amperes, for easy and efficient connections to the vehicle's onboard circuitry. An industrial grade 100A circuit breaker interfaces the batteries and motor controller for additional safety.

The stopping of the vehicle is another safety consideration. Q can be stopped in three ways, each of which can bring the robot to a complete stop within two feet distance. One way is to use the red e-stop push button on the top rear end of the vehicle. Another method is to use the remote control to wirelessly stop the vehicle during its run. The effective distance for this method is 50 feet. The last method is the use

of the on/off switch on the control panel. The multiple circuit breakers and fuses throughout the power system ensure that power will be cut to the motors in the event of a power failure.

9. JAUS

The Joint Architecture for Unmanned Systems (JAUS) has been a top learning priority for the Trinity Robot Study Team since it was added to the IGVC competition in 2006. That year the team completed Level 1 compliance with its ALVIN VII vehicle. Over the past two years, team members have worked to establish a new software framework for its latest vehicle, Q, and further JAUS implementation was pursued.

For this year, the state machine-based software architecture developed for last year's IGVC was reworked into level 3 JAUS compliance as part of a larger RST effort toward code organization, modularity, and reusability. A planning phase included reviewing Reference Architecture v3.3 and teaching JAUS concepts to new team members.

The framework developed for Q combines features from the two most established university JAUS toolkits currently available: Virginia Tech and University of Florida. The Virginia Tech's Master's Thesis by Ruel R Faruque, "A JAUS Toolkit for LabVIEW, and a Series of Implementation Case Studies with Recommendations to the SAE AS-4 Standards Committee," provided us with practical and detailed documentation of creating a JAUS-compliant system using NI LabVIEW. However, his source code is still unavailable and the system's implementation includes many unnecessary (for our purposes) JAUS features that could become troublesome and complicate matters. The University of Florida openJAUS project is completely open-source, but is customized for linux and runs on Java and C languages. The communication protocol, however, uses UDP via loopback between JAUS components and the node manager, a solution that is particularly appealing to the Q team as components maintain their independence as sub-VIs and can be split amongst multiple processors (i.e. Laptop and NI Compact Fieldpoint).

10. Predicted Performance

Extensive testing of all system was performed in order to ensure that Q is able to successfully complete each of the IGVC challenges.

10.1 Mobility

Q is driven by a pair of 500W motors at 3000rpm with a 26:1 gear head and 16" diameter wheels. This corresponds to a theoretical maximum speed of 9.5 mph on level surfaces. However, in compliance with IGVC speed regulations, the motor controller is configured to limit speeds to 5 mph. The drive system was designed for rough terrain and ramp climbing has been tested up to 20°.

10.2 Battery life

There are three battery systems; the laptop battery, Nilar batteries for the motor system and UltraLife battery for the remaining subsystems. The laptop battery has been tested at 2.5 hours runtime at full CPU load. The pair of Nilar batteries has been tested to a half hour of continuous runtime at maximum motor speed. With one lightweight UltraLife battery running aboard the vehicle during operation, the system is capable of 70 minutes of continuous runtime before the battery must be replaced.

10.3 Complex Obstacles

The best way to handle obstacles such as dead ends is to avoid them by following a well planned path. If Q finds itself in a dead end, the VFH algorithm will cause Q to turn around until it finds a clear path. Potholes are detected using image processing and are considered in the same manner as all other obstacles. The SICK laser range finder is capable of obstacle detection of up to 80m; for the purposes of this competition, we limit obstacle detection to 20m.

10.4 GPS Waypoint Accuracy

In testing, Q reached a variety of waypoints within an accuracy of about 1 meter. Readings given by the GPS hardware were tested on a one-dimensional 50m space. Readings were taken at 1 or 2m intervals. 31m corresponded to 1 sec according to the Global Geodetic System. Thus, 1m corresponded to $1/31$ m, which equals 0.032 seconds or 0.0005 minutes. Hence a 0.0005 minutes change was expected in every 1m interval, and a 0.0011 minutes change was expected in every 2m interval. The average error for this test was 1.26m. The implementation of an extended Kalman filter will further reduce the error.

10.5 System Reaction Time

The overall system reaction time is 2Hz, the bottleneck in the system is data processing; the table below shows data rates of each component. Testing has shown that a 2Hz decision cycle is fast enough to make appropriate decisions. Below is a table of data rates of each component.

Component	Data Rate
SICK LMS 291	70 Hz
Cameras	15 fps
Motor Controller(linked to optical encoders)	16.6 Hz
Compass	8 Hz
DGPS	20 Hz

Table 10.1: Component Data Rates

11. Vehicle Cost

Throughout the design and fabrication process of Q a concerted effort was placed on minimizing the cost by actively pursuing industry donations and support as well as reusing components from previous robots. The table below shows each component used in Q along with retail cost and cost to the team. Improved navigation algorithms also allow for a less accurate and less expensive DGPS system. The team also uses inexpensive sensors such as a standard webcam. The SICK LMS291 represents a majority of the cost; the improved sensing ability makes this a worthy investment.

COMPONENTS	RETAIL COST (\$)	COST INCURRED (\$)
ADS Tech Pyro Cameras(2)	180	180
Crescent A100 DGPS	2000	0
Caster Assembly	150	150
Chassis	650	0
Encoders	100	100
Honeywell Compass (HMR-3300)	750	0
IEEE1394 Hub	50	50
Motors	1000	0
NI cFP	3188	0
Nilar Membrane NiMH 24V 9Ah Battery (3)	1000	0
SICK LMS291 Laser Range Finder	4000	4000
Power Supply Board	150	0
Remote Control	180	0
Roboteq AX3500 Motor Controller	400	300
UltraLife 30V Lithium Ion Battery	385	0
Wiring	50	50
Total	14233	4830

Table 11.1: Cost Itemization

12. Conclusion

Q is an autonomous vehicle designed by the Robotics Study Team (RST) at Trinity College. The vehicle features a reliable and sturdy frame which enables it to be used on many different types of terrain. Substantial innovation in the areas of control algorithms and the mechanical platform are combined with advanced sensing equipment such as a SICK laser range finder. These features enable Q to perform in any situation. Q provides a solid research foundation for a military autonomous vehicle. Its payload capacity and small footprint makes Q ideal for transportation of equipment in hostile environments. An adjustable accessory frame allows for multiple sensor configurations. By the process of iterative design along with the help of the latest software tools and cutting edge battery technology, the RST has Q, which is an example of an efficient and effective autonomous vehicle that should perform well at the 16th annual IGVC competition.

13. Sponsors

- Connecticut NASA Space Grant Consortium
- Enterprise Rent-A-Car
- Hemisphere GPS
- Honeywell International Inc.
- Teknicircuits Inc.
- Travelers Insurance
- Trinity College
- UltraLife Batteries
- National Instruments
- Nilar, Inc.
- PCB Express
- PerMobil Corporation